



Where Life Flows





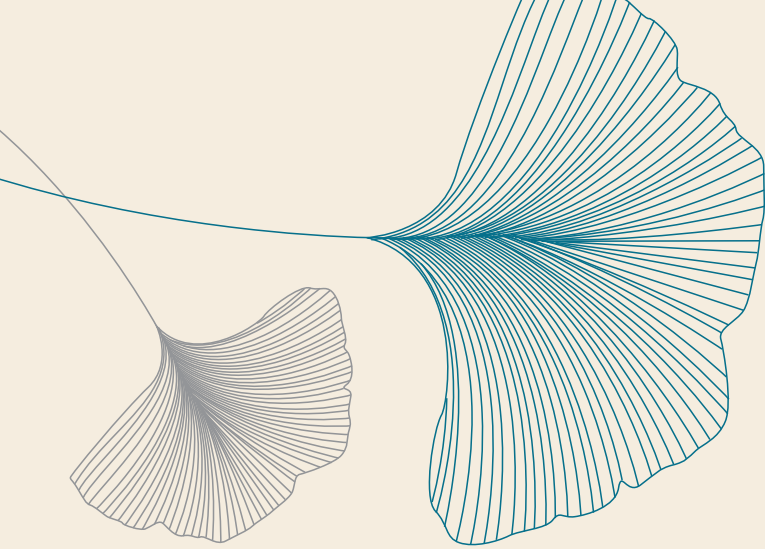
“

Welcome to a home
Adjoined by blissful blues
Engulfed in glistening greens
Intertwined in the city's heart

A sanctuary amidst the urban tide
Where serenity thrives, side by side
A view adorned with the city's sway
Panoramic views, both night and day

A habitat of happiness
Nestled amidst nature
A sanctuary of solace
Where souls find nurture

”



A Perfect Place to make lasting memories

Once known for its beaches and historical monuments and as the weekend getaway for Mumbai residents, Palghar District has undergone remarkable development in the recent years. Much sought after for various industries, with the presence of MIDC, Palghar is becoming a preferred residential destination as well.

WELL-CONNECTED through the WESTERN RAILWAYS network, Palghar has easy access to commercial hubs like Lower Parel, Andheri and Churchgate, making travel seamless.

There will be lots to explore at Palghar once you move in. From the Shirgaon Fort, Devkhop Dam, Kelva Beach to the revered Pratishirdi Shri Saibaba Mandir.

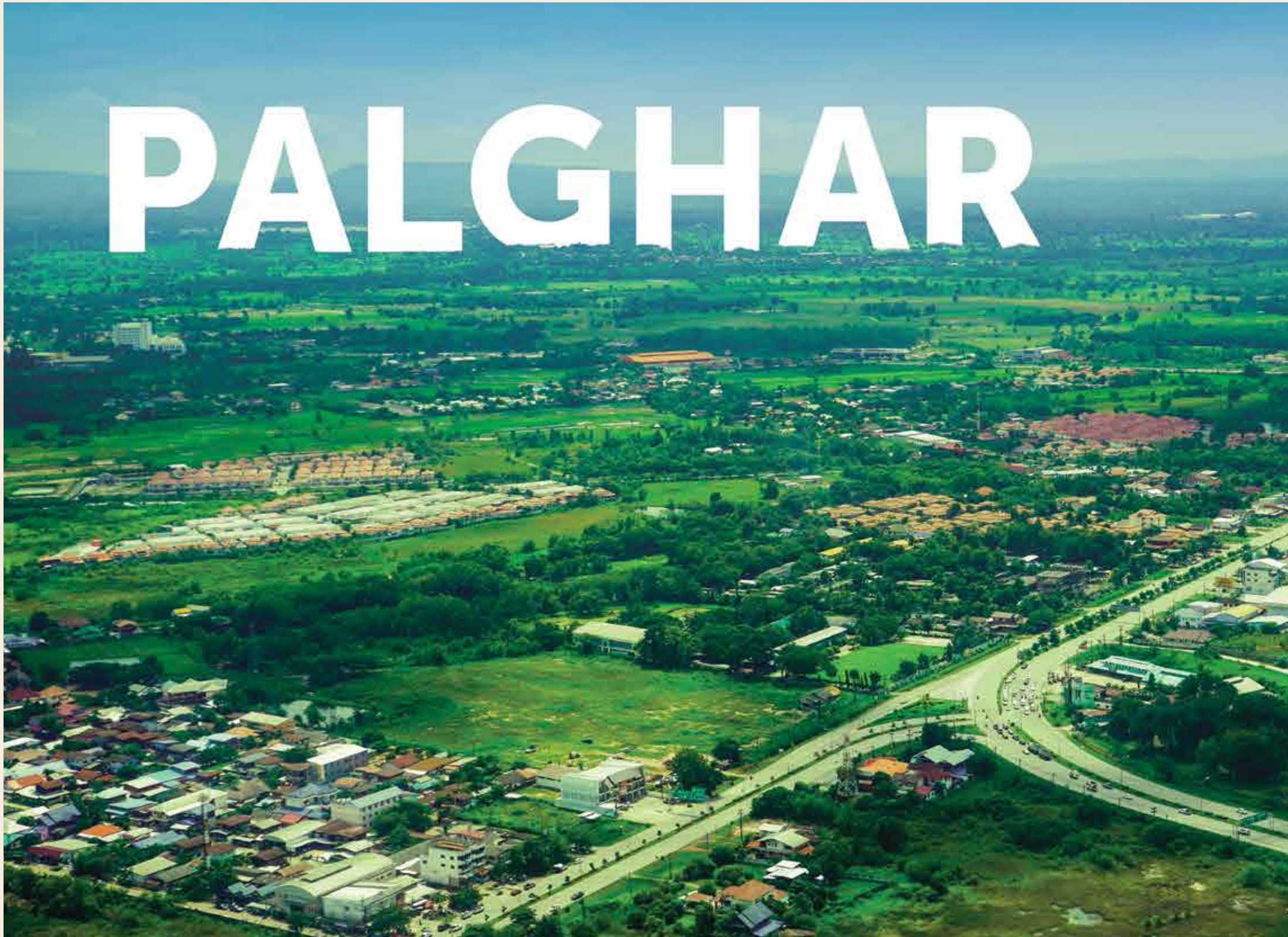
A stop for the upcoming 'BULLET TRAIN', a site of a GREENFIELD AIRPORT project, a MAGNIFICENT DISTRICT ADMINISTRATION OFFICE has been set up by CIDCO and it also plans to invest ₹ 3,800 Cr. on new township development, all making Palghar the perfect location for future living.

Immerse yourself in a vibrant community that celebrates progress, connectivity, and the beauty of nature. Make your home at VBHC Springwater and cherish every moment in this flourishing oasis of tranquility and growth.





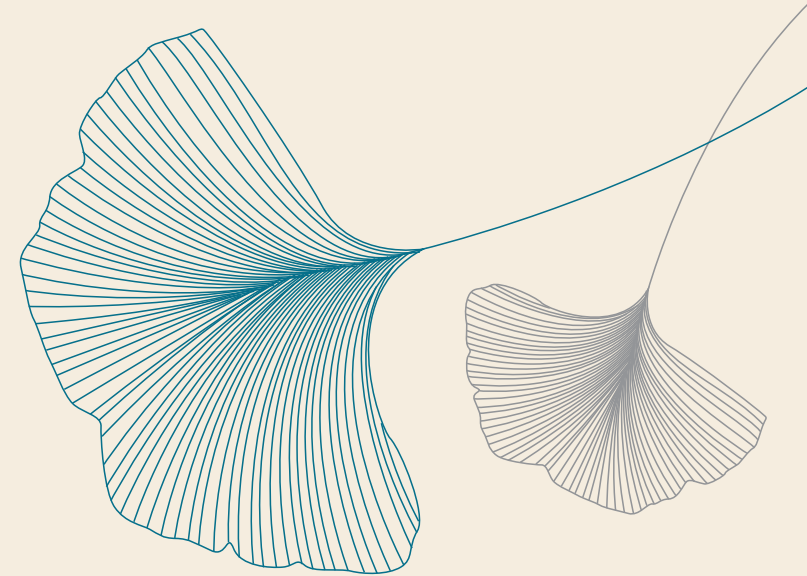
PALGHAR







Disclaimer: Clubhouse is a part of a larger community.



The Largest Clubhouse in Palghar

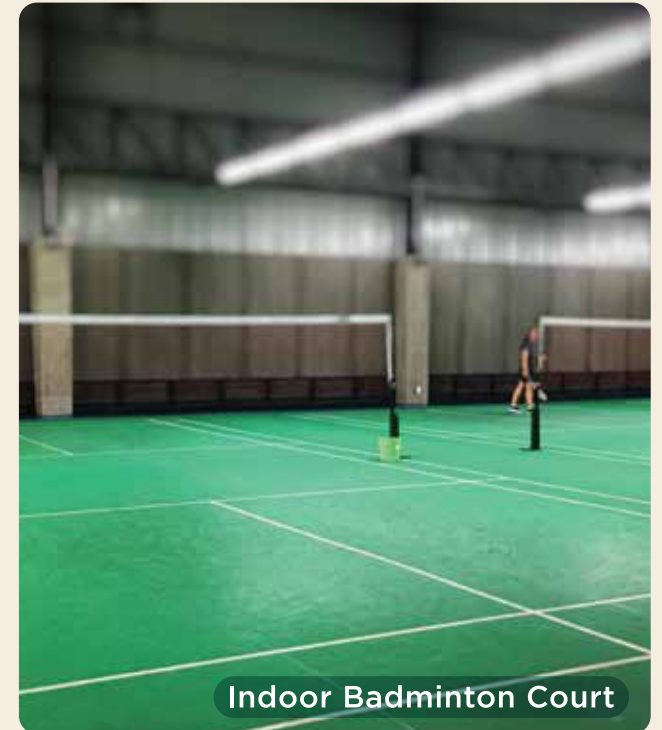
More space for happiness

We believe in enhancing your living experience with a range of amenities that echo the natural elements surrounding us. Discover a harmonious blend of modern living and nature's embrace at VBHC Springwater.

*Artistic Impression



Swimming Pool



Indoor Badminton Court



Community Hall



Semi-Open Cafeteria



Restaurant



Guest Rooms



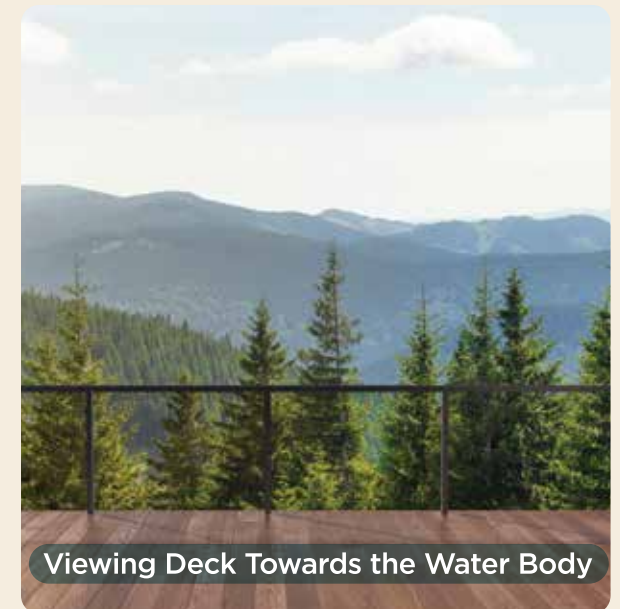
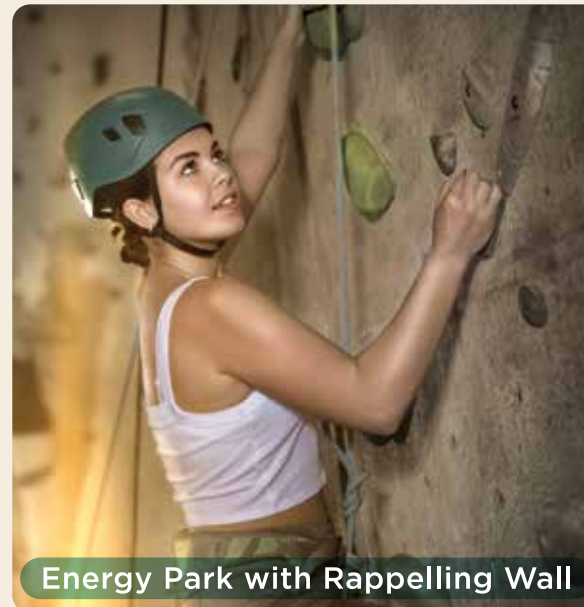
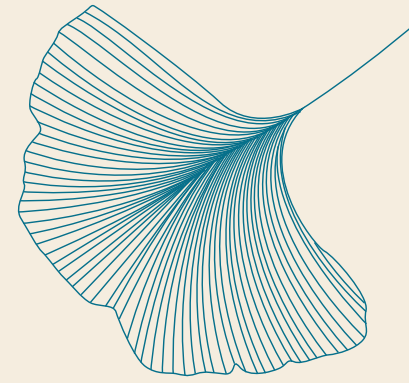
Indoor Games



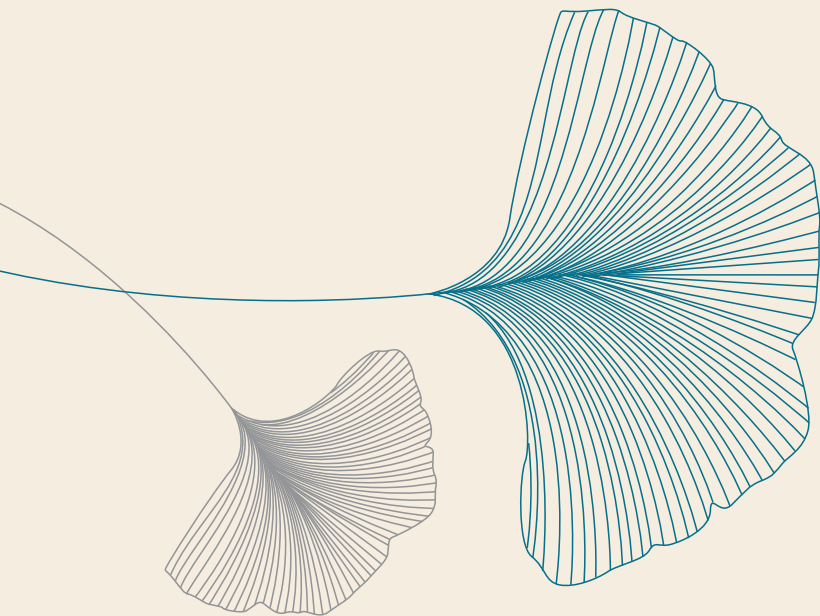
Gymnasium

*Images are for illustration purposes only.

Project Amenities



*Images are for illustration purposes only.



Where Nature unleashes
its majesty

The Journey Begins

Step into the extraordinary realm of **VBHC Springwater**, where nature's embrace seamlessly intertwines with the vibrant rhythm of urban life. Nestled within 2 SPRAWLING ACRES of land, harmoniously integrated into a larger 47-acre land parcel, this haven presents you with breathtaking 1 & 2 BHK apartments amidst the verdant oasis of Palghar.

Whether you seek an idyllic vacation retreat or a sanctuary of everyday bliss, **VBHC Springwater** is the unparalleled destination that beckons you to make it your own. Prepare to discover a world where tranquility and convenience converge, offering you a unique living experience.



*Artistic Impression



Master Plan

INDEX:

- 1 ENTRY/EXIT
- 2 RESIDENTIAL TOWERS
- 3 MULTIPURPOSE HALL
- 4 SHOPS
- 5 15.00 M WIDE ROAD
- 6 9.00M WIDE ROAD
- 7 STP
- 8 WTP
- 9 TRANSFORMER
- 10 OUTDOOR GYM
- 11 VIEWING DECK
- 12 KID'S PLAY AREA



Floor Plan



1 BHK DELUXE

Saleable Area (Sq. ft.)	429.29
Usable Area (Sq. ft.)	314.94
RERA Carpet Area (Sq. ft.)	286.64



2 BHK DELUXE

Saleable Area (Sq. ft.)	905.34
Usable Area (Sq. ft.)	696.91
RERA Carpet Area (Sq. ft.)	604.50

TYPICAL FLOOR PLAN





Experience Contemporary Luxury

Indulge in meticulously crafted homes at VBHC Springwater. Contemporary aesthetics meet modern convenience, offering a complete package of everyday delight.



STRUCTURE

- RCC shear wall structure
- Earthquake resistant design (Seismic Zone- III)



FLOORING

- Vitrified tiles in living, bedrooms, dining, and kitchen
- Anti-skid ceramic tiles in balcony and toilets



KITCHEN

- Granite slab and single bowl stainless steel sink
- Ceramic tile dado up to 2 feet over the granite counter
- Provision for exhaust fan in window
- CP fittings: Jaquar Essco series or equivalent



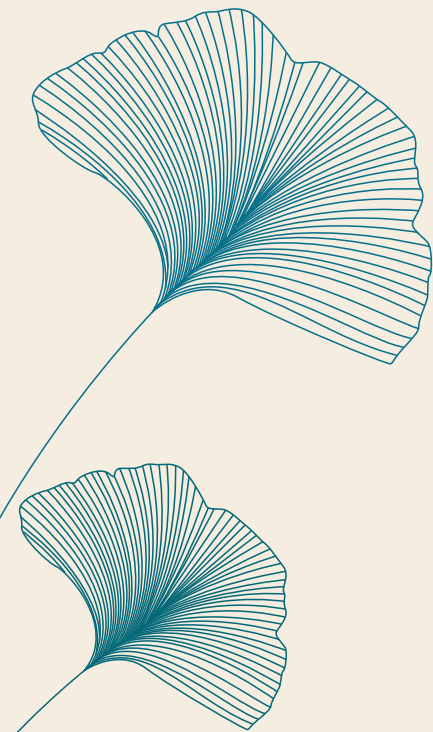
TOILET

- Ceramic wall tiles up to 7 feet height
- CP fittings: Jaquar Essco series or equivalent
- Sanitaryware: Jaquar Essco series or equivalent
- Provision for exhaust fan in ventilator
- Geyser provision
- Solar hot water provision for top floor



LIFTS

- Schindler or equivalent make





DOORS

- Main door frame: Solid wood
- Internal door frames: Solid RCC
- Main door shutters: Moulded panel door
- Bedroom door shutters: Moulded panel door
- Toilet door shutters: Flush doors



WINDOWS

- Powder coated aluminum windows



PAINTING

- Internal wall: Emulsion paint
- Ceiling: Distemper
- External: Weathershield emulsion paint



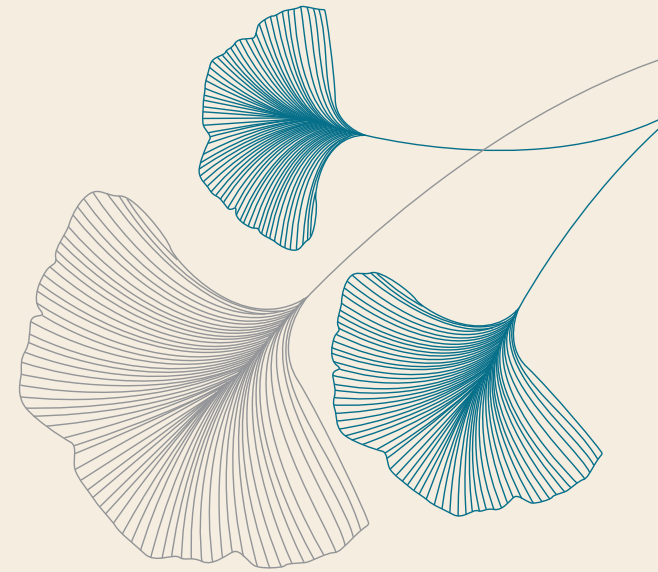
ELECTRICAL

- Conduits: Nelco or equivalent
- Wire: Polycab or equivalent
- Modular switches and sockets: Salzer or equivalent
- TV socket for both living room and bedrooms (only conduits)
- Telephone point for living room (only conduits)
- AC power point for bedroom
- Provision for AC point in living room (only conduits)
- For each apartment DG back-up (0.5KW) for lighting and fan

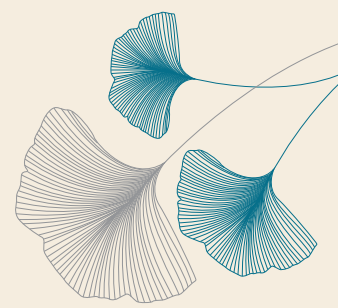


OTHERS

- DG power back-up for all external lighting and utilities
- Common water treatment plant
- Common sewage treatment plant
- Rainwater harvesting pits







VBHC LEGACY

**A home that's
nurtured with love**

**An environment
that resonates with joy**

**Spaces that come
alive with laughter
and abundance**

At **VBHC**, we are committed to **creating homes** that deliver all these and more. Through **quality construction** that never compromises or cuts corners, planning that is as meticulous as it is thoughtful, **amenities** that bring joy to your **family and surroundings** that are both secure and verdant.

All so that your world is filled with love and happiness. Because we know, that is what makes your world truly blessed, truly cherished.

At **VBHC**, we are not just building homes. We are **Building Happy Worlds**.

VBHC Value Homes Private Limited was founded and incorporated in July 2008 by the former Chairman of Mphasis, Mr. Jaithirth (Jerry) Rao and former Consumer Banking Head of Citibank, Mr. P. S. Jayakumar

An amalgamation of people with rich and vast corporate experience from diverse backgrounds, VBHC believes that good quality living should be within everyone's reach and grasp.

Landmark projects in **Mumbai, NCR, Bangalore and Chennai** are testimony to this belief.



BUILDING HAPPY WORLDS!

VBHC Springwater,
Devkhop, Palghar - 401404

 **vbhcspringwater.com**  **9143 870 870**

MAHARERA Registration No: P99000051828

For more information, please visit maharera.mahaonline.gov.in

Disclaimer: This brochure is conceptual in nature and by no means a legal document. The representations, visuals, and specifications mentioned herein are subject to change at the discretion of the promoter. All images, shades, colours, and styles of the buildings, finishes, and landscapes are artistic conceptualizations for illustration purposes only and do not purport to exactly replicate the products. Any furniture and fixtures shown here are not part of the offering and are purely for showcasing possibilities. The external infrastructure, such as roads, and the landscape, such as trees and water bodies, are only artistic images of the surroundings and are not proposed to be developed by the promoter. The promoter reserves the right to make changes or alterations.

